



GREENWICH COMMUNITY ASSOCIATION NEWSLETTER

Future Development of Shell's Gore Bay Terminal

Most Greenwich residents will be aware that Shell ceased refining operations at Clyde in August 2012, and have imported refined products through their Gore Bay terminal since then. Shell is pumping the majority of the products (petrol, diesel and jet fuel) directly to the Clyde facility using the site's existing assets. Marine fuel oil and small quantities of diesel are currently the only products stored at Gore Bay.

This has resulted in longer berthing times for ships, and longer exposure to pumping noise to the annoyance of some local residents. Many community consultation meetings have been held on this subject.

Shell will submit a DA to the Department of Planning and Infrastructure to seek approval for major works which will result in modification of the Gore Bay terminal to operate more efficiently as a finished fuels terminal. These planned works include the removal of redundant tanks and the installation of a geodesic dome (reduces vapour formation and hence odour) to one of the existing tanks intended to store jet fuel. Discussions between Shell and various Government regulatory authorities to define criteria for assessing environmental impacts including air quality, emissions and noise associated with Shell's operations have dragged on for much longer than anticipated, so the formal DA is now unlikely to be lodged before the end of June.

The timetable for approval of that DA is such that it is now unlikely to be put on public display for comment until September. Lane Cove Council will then likely convene a public meeting to help residents better understand how the proposed changes will affect the local community. Allowing for consideration of submissions and all other factors, it is unlikely

that the DA will be approved much before the end of 2013, or that substantial work could commence before the middle of 2014.

Responding to pressure from local residents, Shell will submit interim DAs for lesser works to LCC and the NSW Roads and Maritime Services. The proposed interim works will include pipework 'de-bottlenecking', improved berthing arrangements and acoustic treatment of items of equipment that have been identified as noisy. The old crude oils storage tanks are currently being cleaned for future storage of some refined products (diesel and jet fuel - Shell has committed to no petrol storage at Gore Bay). These interim works, if approved, will significantly reduce current noise levels, and may result in shorter ship berthing times.

Shell Gore Bay Terminal

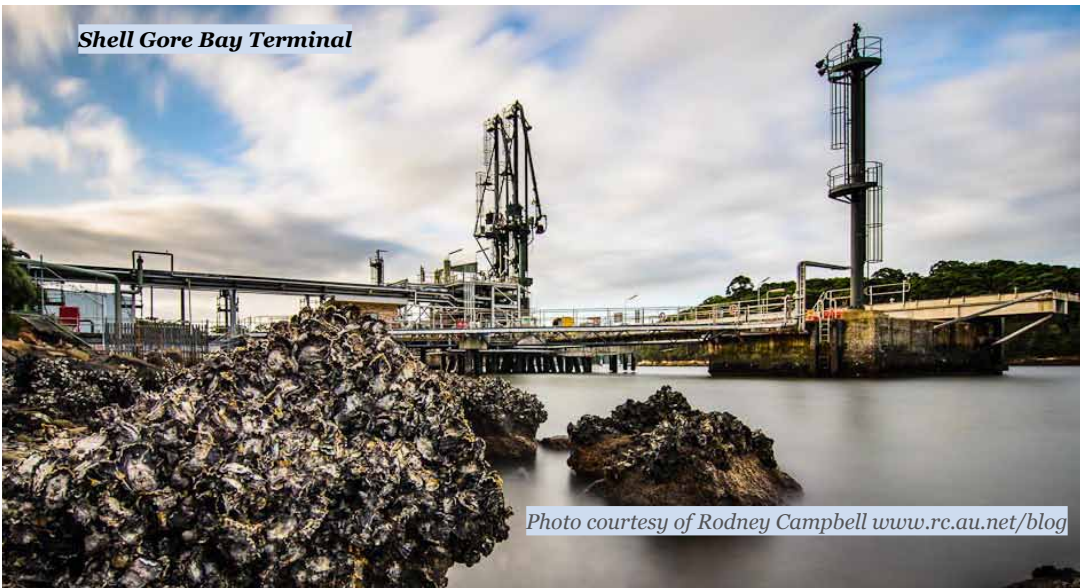


Photo courtesy of Rodney Campbell www.rc.au.net/blog

2013 General Meeting Dates

All meetings are from 7.30pm to 9.30pm, and refreshments are served during the meeting. They are held at the Greenwich Community Centre, 46 Greenwich Road, and dates are as follows:

- Wednesday, 19 June
- Wednesday, 21 August
- Wednesday, 23 October
- Wednesday, 18 December
- Wednesday, 19 February 2014 (AGM)

We welcome all residents to attend and contribute to these meetings and look forward to seeing you there.

Lane Cove Citizenship Awards

Congratulations to Merri Southwood for being awarded the Leadership award, Sally and Jack Ford for Citizen of the Year, and Michael Noetel for Contribution to Sport. These awards, held this year on 8 May, acknowledge outstanding citizens for their contribution to the Greenwich community.



Sally and Jack Ford



Merri Southwood



Michael Noetel

Planning White Paper Forum

Fifty people from Greenwich, Northwood and Osborne Park attended a forum organised by the Association on 29 May. The Association is a member of the Better Planning Network (BPN) a respected consortium of over 390 community groups throughout NSW that was initiated in Lane Cove. The forum opened with a presentation from June Hefferan from the BPN who started with some remarks on the

change in direction from the current 1979 Planning Laws which had as their premise ecological sustainable development. June singled out three matters of particular concern to residents.

1. Sustainable development that protects the environment and social structure needs to be given equal weight with promoting the State's economy.
2. The community should be consulted at all levels of the planning system, especially at the local level. (The government seeks to have 80% of all Development Proposals approved by a Private Certifier without any notification to adjoining residents and no opportunity to submit objections within five years)
3. The proposed ability for a developer to engage a Private Certifier to approve and then certify compliance for a development needs to be abandoned in favour of utilising Council staff or a Private Certifier allocated by Council

What can you do? Links to further information and where to make a submission are on the GCA website.

Stephanie Bashford, Council's Manager of Strategic Planning and principal architect of Council's recent Local Environment Plan reminded residents that the State Government's overriding of Council decisions on planning has been part of the political landscape for decades so the proposed action to be imposed on Council is nothing new. Council's challenge is to participate in the preparation of Regional and Sub Regional Plans and to prepare with residents a Local Plan that will protect the local environment and resident amenities to the greatest possible extent.

One major issue is that the current discrete residential zoning for low, medium and high density housing will be replaced by Residential only, which theoretically means that blocks of units or townhouses could be built anywhere in a Residential Zone.

The full report from the White Paper Forum is on the GCA website (www.greenwich.org.au) and on the GCA noticeboard in the bus shelter opposite the shops.

Crazy Whist Night

The Isabelle Heim fund held another highly successful Crazy Whist Night in Greenwich Community Hall on Saturday 4th May, raising over \$6,000 from the event, raffle ticket sales and some generous donations. The event, which has become so popular it seems destined to become an annual fixture, is attended by many old friends from the Swiss Club, as well as from the local community.

Reminder- 2013 GCA Subscriptions

Payment for your GCA 2013 subscription has been made easier as you can now pay directly into our bank BSB 062247 Acct No 10104085, as well by mail or deposit in our letterbox at Greenwich Pharmacy.

Bag Share Project

The Greenwich Bag Share Project will be launched on Saturday 22 June with a Bag Share Box available outside the IGA and Hooked. Shoppers who arrive at the shop without a bag or underestimate the number of bags they need can BORROW one of the bright yellow bags in the box and return it next time they shop. Members of the Association will be on hand during the weekend to explain how the system works and answer any questions. This GCA initiative has been funded by a grant from Lane Cove Council.

Stay in Touch

Want to Stay in touch with what's happening in our community?

Why not subscribe to our website as we plan to enhance the site and provide more information on important local issues.

Subscribe to the online version of our newsletter: www.greenwich.org.au

**Tom Gervay, President 0418 230 889
Alan Winney, Secretary 9438 5776**

Proudly sponsored by Dobsons Printing
Tel: 1800 362766
www.dobson.com.au


For all your printing and design needs